

Whānau Care Services Hutt Valley

Patient/whānau information

He kōrero mā ngā tūroro me ngā whānau

Te wāhanga ki a matau / what we do

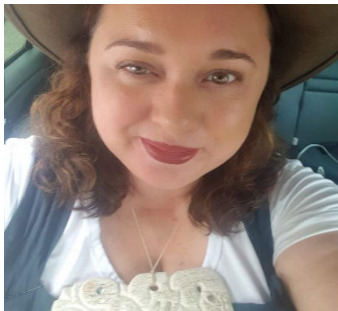
We provide cultural and practical support for Māori patients and whānau while you are an inpatient at Hutt Valley Hospital. We assist by providing whakawhānaungatanga, manaaki and:

- Manaakitanga, practical help and information for you and your whānau.
- Connection, bridging the gap between you, your whānau and the medical team.
- Cultural support.

Contact us

- Ask your health professional to make a referral.
- Email us at Whanaucare@huttvalleydhb.org.nz
- Visit us in the Clock Tower Block Level 1 of Hutt Hospital.

Who can visit me?



Kapareira Lummis

Ngāti Porou, Te Aitanga-a-Hauti

Kaiārahi tae Pakeke
Māori Clinical Nurse Specialist across
CCHV District
Support for people
(50 years+) for health of the older
person.



Merle Takimoana

Ngāti Maniapoto

Manaaki Whānau
Support for you and your whānau while
you are in hospital.



Herapeka Hepi

Ngāti Maniapoto, Tainui Waka

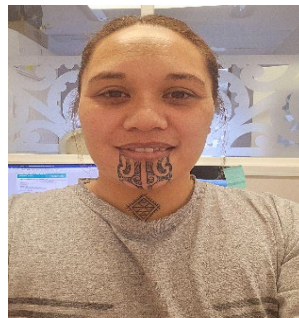
Manaaki Whānau
Support for you and your whānau while
you are in hospital.



Kapua Quinn

Ngāti Raukawa ki Wharepūhanga,
Maniapoto, Ngāti Raukawa ki Ngāti
Whakare

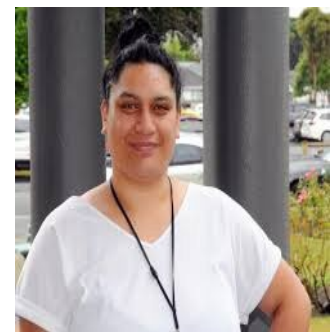
**Kaiwhakahaere Ratonga | General
Manager**
Supports the CCHV District Whanau
Care Services team.



Atawhai Manuel

Ngāti Porou, Te Aitanga-a-Mate,
Ngāti Kahungunu ki Heretaunga

**Kaiawhina Whaiaro | Personal
Assistant**
For the General Manager.



Sharelle Ratu

Te Taitokerau, Ngāti Raukawa

Hapū māmā Social Worker
Supports hapū wāhine during their
Hapūtanga.