

# How to add or remove additional pages

**Document author:**  
Nurse Coordinator Professional  
Development  
**Authorised by:**  
Nurse Director Policy & Practice 2DHB  
**Issue date:** 31/07/2024  
**Review date:** 31/07/2025  
**Date first issued:** 2020  
**Document ID:** ePort5

**The first page of these instructions is a reminder of how to get to your ePortfolio. If you are familiar with this please go to page 2.**

## Accessing eLearning and the ePortfolio



**Please use Google Chrome to access your portfolio.**

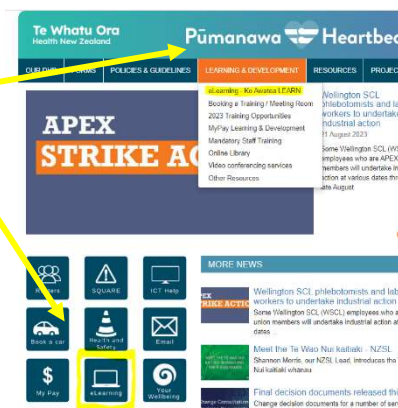
**Other browsers including Microsoft's Internet Explorer or Edge are not currently compatible.**

The ePortfolio is accessed through the Hutt Valley eLearning site, Ko Awatea. There is no separate login.

### Step 1:

From the Hutt Valley intranet page, navigate to **Ko Awatea LEARN**. See image (right) for guidance. You can use either option highlighted in yellow.

Then select the Ko Awatea LEARN elearning logo.



**Alternatively**, and if logging in from a home computer, you can use the following web address: <https://koawatealearn.co.nz/>

### Step 2:

Login using your Ko Awatea username and password.

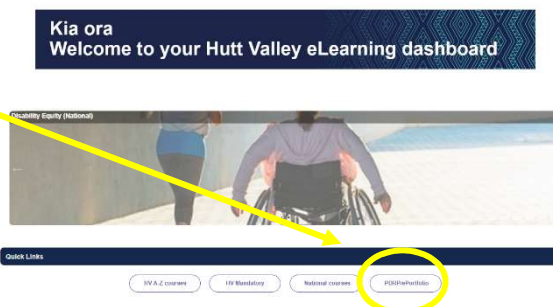
If you have forgotten your password then please use the "forgotten password" link.

For any other login difficulties please contact the elearning Coordinator for assistance, [training@huttvalleydhb.org.nz](mailto:training@huttvalleydhb.org.nz) including Ko Awatea in the subject title.

### Step 3:

Select the PDRP/ePortfolio button under Quick Links.

**Note:** If this is the first time you are using the ePortfolio the next screen will ask you to enrol in the course. Select the enrol button when prompted.

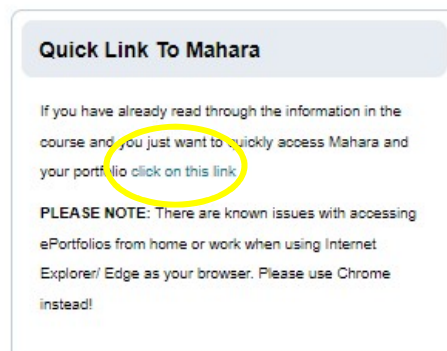


### Step 4:

Welcome to the gateway.

If this is your first time accessing the ePortfolio, we recommend you read through the guides for completion of an ePortfolio under the heading **Creating your ePortfolio**.

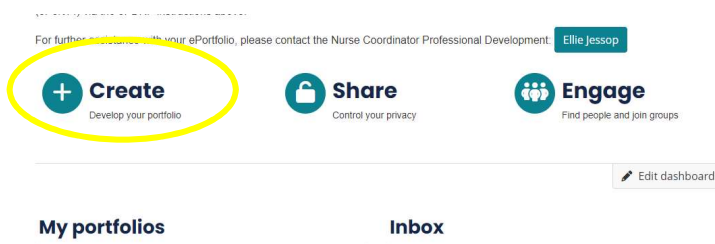
To move through the gateway to your ePortfolio homepage please select the link under **Quick Link to Mahara** on the left of your screen as shown in the image (right).



## How to add or remove additional pages

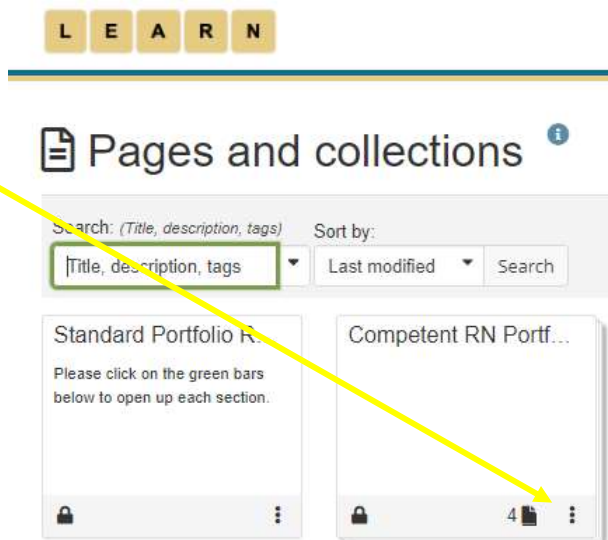
### Step 5:

Once logged in, access your portfolio from the home page by selecting the large blue “Create” button which will take you to the next page entitled “pages and collections” where you will see your portfolio.



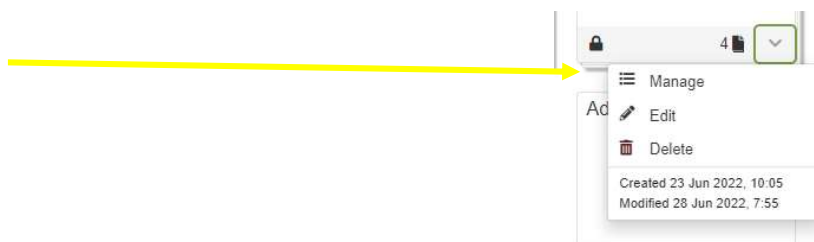
### Step 6:

On this page identify your portfolio, and select the three vertical dots menu underneath it.



### Step 7:

In the drop down menu select “manage”.



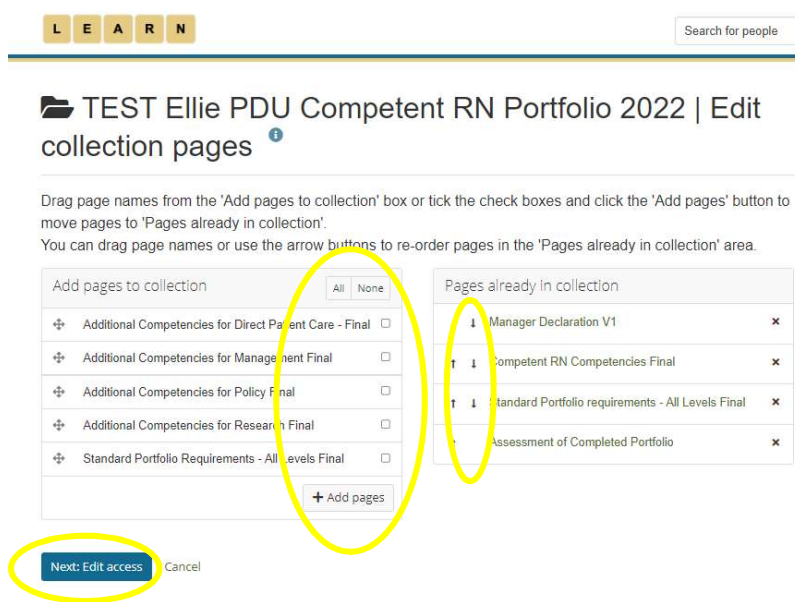
### Step 8:

On this page select the pages you want to add from the “Add pages to collection” on the left and click “+Add pages” to move it to your portfolio.

The pages should now be in your collection. You can use the arrows to move the new pages to a different position within your portfolio if needed.

On the same page, if you want to delete unnecessary pages, click the cross by the page you want to remove.

When you have finished click “Next: Edit access”.

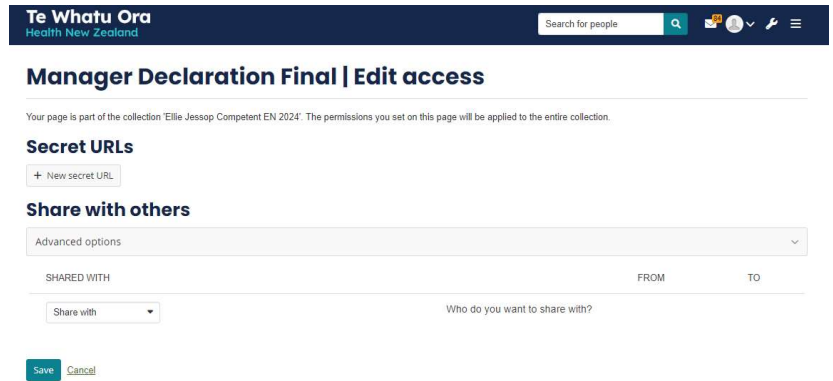


## How to add or remove additional pages

### Step 9:

This page gives you the opportunity to check you are sharing your portfolio with the correct people and groups. See *ePort11: How to share your ePortfolio* for further information.

If no changes are needed click **“Save”**.



The screenshot shows the Te Whatu Ora Health New Zealand interface. At the top, there is a dark blue header with the logo and a search bar. Below the header, the page title is 'Manager Declaration Final | Edit access'. A notice states: 'Your page is part of the collection 'Ellie Jessop Competent EN 2024'. The permissions you set on this page will be applied to the entire collection.' The 'Secret URLs' section has a '+ New secret URL' button. The 'Share with others' section features a dropdown menu for 'Advanced options' and a table with columns 'SHARED WITH', 'FROM', and 'TO'. A 'Share with' dropdown is visible under the 'SHARED WITH' column, and the text 'Who do you want to share with?' is present. At the bottom, there are 'Save' and 'Cancel' buttons.

### Step 10:

You will find yourself back on in your portfolio.

Alternatively, you can select the Te Whatu Ora logo at the top left of the page to return to your ePortfolio home page.



If you find that a correction is needed on this 'How to...' guide please contact the Nurse Coordinator Professional Development: [PDRP@huttvalleydhb.org.nz](mailto:PDRP@huttvalleydhb.org.nz)